

young | **leaders** | council

NASHVILLE (TUESDAY)



Renata Bass
Leadership Development
Consultant



Lauren Davis
Big Machine Label Group



Mia Delano
Vanderbilt University
Medical Center



Shelby Doyle
National School Choice
Awareness Foundation



Alexandria Evans
Major Cycling Brand Co.



Kevin Haroulakis
Tennessee Department
of Correction



Joey King
BluWave



Andrew Komornik
Apex Plus Group, Inc.



Hailey Lund
HCA Healthcare

young | **leaders** | council

NASHVILLE (TUESDAY)



Anjali Mukherji Doria
The Dava Foundation



Max Orlet
Silicon Ranch Corporation



Jamie Reschke
Lipscomb University



Katie Scholl
Freightwise



Brady Shipman
Community Resource Center



Owen Shirk
Pinnacle Financial Partners



Reece Stallman
Tractor Supply Company



Courtney Stevens
Clarus Care



Ethan Wilson
Ethan and Eddy Real Estate



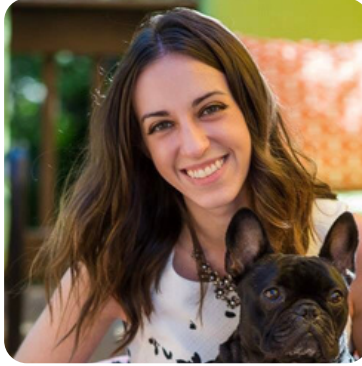
(Teresa) Shiyue Zhang
Vanderbilt University

young | leaders | council

WILLIAMSON COUNTY (TUESDAY)



Katelyn Barham
Meridian Law



Lexi Bolinski
Habitat for Humanity
Williamson-Maury



Corben Champoux
Brown & Brown



Brian Davis
PwC



Bree DeMoss
Habitat for Humanity
Williamson-Maury



Savannah Fulmer
Upstream Digital Marketing



Anthony Govic
Independent Consultant -
Marketing



Emily Brooke Gray
Tennesseans for
Student Success



Natalie Gregg
Tennessee Hospital
Association

young | **leaders** | council

WILLIAMSON COUNTY (TUESDAY)



Kaitlyn Kerrigan
United Communications



Miriam Kleine-Kracht
First Horizon Advisors



Melanie Lawrence
Gilda's Club



Jenna Lawson
PYA, P.C.



Avinash Palaparthi
R.C. Mathews Contractor



Casandra Pastula
Newport Healthcare



Austin Sloan
F&M Bank



Lori Smith
TMPartners



Matt White
FirstBank